



TRANSPORTATION ADVISORY COMMITTEE

7 Twin Circle Drive, Arlington, MA 02474

To: Board of Selectmen, Arlington, Mass

From: Transportation Advisory Committee (TAC)

Subject: Recommendations for Phase 1b Pedestrian Safety Improvements at Peirce School

Date: 18 May 2009

In August 2008, the Board approved the TAC's Phase 1a recommendations for safety improvements at the Peirce School. These recommendations included modifications to the school zone on Park Avenue Extension, installation of signs in the school drop-off areas and parent education. To complete the Phase 1 recommendations, the Peirce working group has proposed the Phase 1b recommendations below, which were voted unanimously by the TAC on 04/11/09.

Summer Street Recommendations:

1. Install fluorescent yellow green School Advance Warning assembly signs at both approaches to school grounds.

Newland Road Recommendations:

2. Replace faded NO PARKING ANY TIME sign and install new signs on utility poles on the west side adjacent to the school playground and drop-off.
3. Replace ENTER ONLY sign with ONE WAY sign at entrance to school drop-off.
4. Install NO PARKING 7AM-4PM MONDAY-FRIDAY sign(s) on west side between the school drop-off entrance and Blossom Street.

Blossom Street / Newland Road Intersection Recommendations:

5. Install STOP signs on both Newland Road approaches to form a 4-way stop, add ALL WAY legend below each sign.
6. Install NO PARKING HERE TO CORNER signs at all corners of intersection.

Blossom Street Recommendations:

7. Install NO PARKING 7AM-4PM MONDAY-FRIDAY signs on the south side between the school drop-off entrance and Newland Road.
8. Install NO PARKING ANY TIME sign(s) on the north side adjacent to the school drop-off.
9. Install NO PARKING HERE TO CORNER sign on the south side near the crosswalk at Park Avenue Extension.
10. Repaint yellow pavement arrows in white to MUTCD standard at each end of Newland Road and Blossom Street drop-offs.
11. Install DO NOT ENTER sign on the back of the STOP sign at the school drop-off egress.

Park Avenue Extension Recommendations:

12. Install YOUR SPEED IS... radar signs on existing flasher poles at crosswalks. (@ \$2K each)
13. Repair damaged sidewalk panels adjacent to school.

Respectfully submitted,

Elisabeth Carr-Jones – Member
Edward Starr - Chair

Transportation Advisory Committee Members:

Elisabeth Carr-Jones, Jean Clark, Jeff Maxtutis, Howard Muise,
Michael Rademacher, Corey Rateau, Scott Smith, Edward Starr, and Laura Wiener
Web site; www.arlingtontac.com

**Final Report (Phase 1B) for the Peirce School
Arlington Transportation Advisory Committee
May 18, 2009**

Peirce School Working Group

Elisabeth Carr-Jones (TAC group leader), Madeline Colety (Peirce Parent), Corey Rateau (TAC, Police), Carlene Hempel (Peirce Safe Routes to Schools Coordinator and Peirce Parent), Michael Natoli (Peirce Parent), Robert Penta (Peirce Principal).

Process

Since submitting the Phase 1A recommendations, the Peirce School working group has mapped student distribution in the district, established walking zones and primary walking routes for each zone, and identified safety improvements for the primary walking routes to be completed in Phase 2 of the project. Neighbors affected by parking changes have been consulted, and traffic data was collected on Park Avenue Extension in the fall. Follow-up data collection is planned, now that the school zone modifications are in place. The following recommendations complete Phase 1 of the project.

Phase 1B Recommendations (please see attached diagram)

Summer Street:

1. Install fluorescent yellow green School Advance Warning assembly (MUTCD S1-1, W16-9p) signs at both approaches to school grounds.

Newland Road:

2. Replace faded NO PARKING ANY TIME sign and install new signs on utility poles on the west side adjacent to the school playground and drop-off.
3. Replace ENTER ONLY sign with ONE WAY (MUTCD R6-2) sign at entrance to school drop-off.
4. Install NO PARKING 7AM–4PM MONDAY–FRIDAY sign(s) on west side between the school drop-off entrance and Blossom Street.

Blossom Street / Newland Road Intersection:

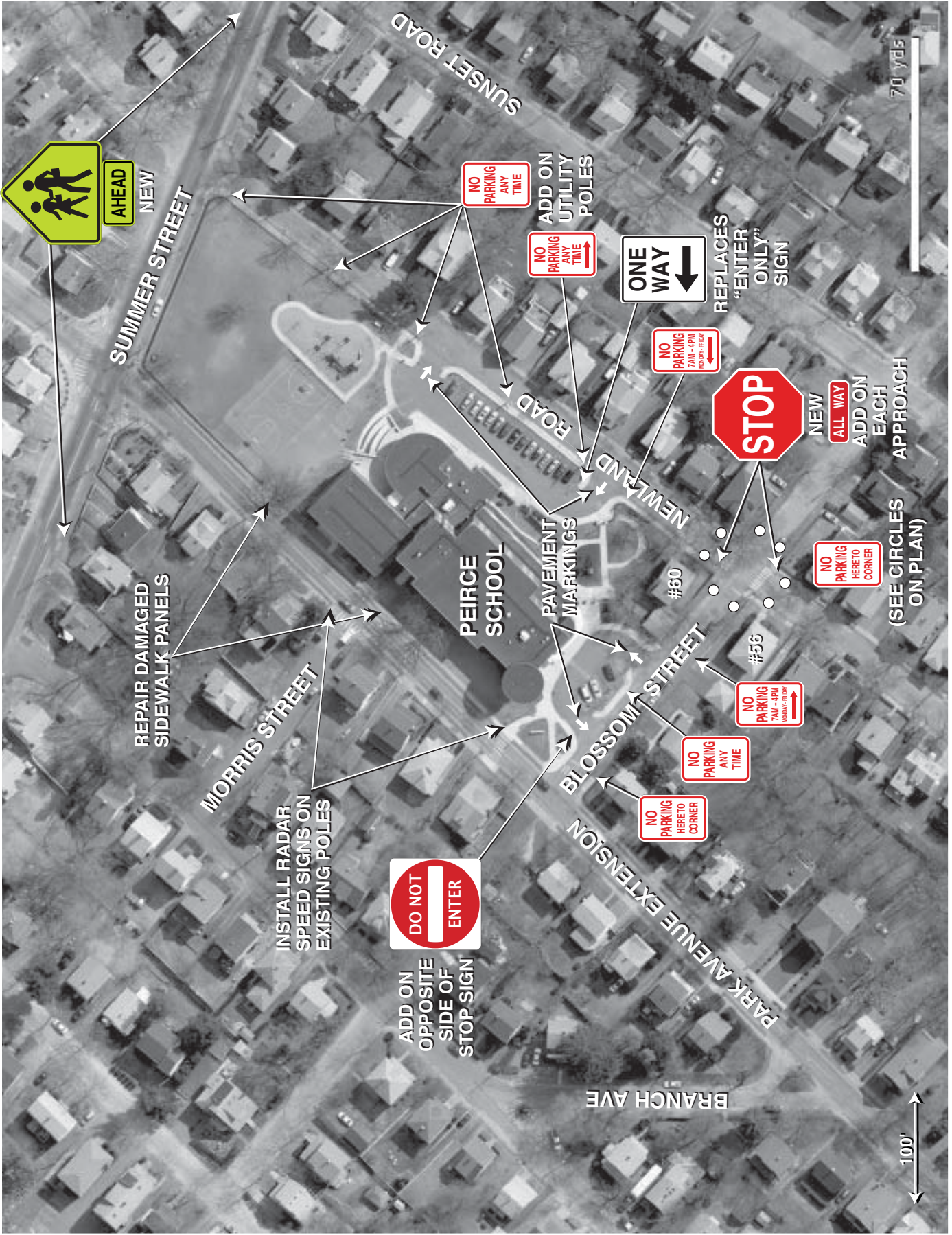
5. Install STOP signs on both Newland Road approaches to form a 4-way stop, add ALL WAY (MUTCD R1-4) legend below each sign.
6. Install NO PARKING HERE TO CORNER signs at all corners of the intersection.

Blossom Street:

7. Install NO PARKING 7AM–4PM MONDAY–FRIDAY signs on the south side between the school drop-off entrance and Newland Road.
8. Install NO PARKING ANY TIME sign(s) on the north side adjacent to the school drop-off.
9. Install NO PARKING HERE TO CORNER sign on the south side near the crosswalk at Park Avenue Extension.
10. Repaint yellow pavement arrows in white to MUTCD standard at each end of Newland Road and Blossom Street drop-offs.
11. Install DO NOT ENTER (MUTCD R5-1) sign on the back of the STOP sign at the school drop-off egress.

Park Ave Extension:

12. Install YOUR SPEED IS... radar signs on existing flasher poles at school crosswalks. (@\$2K each)
13. Repair damaged sidewalk panels adjacent to school.



Peirce School Phase 1B Recommendations