

TOWN OF ARLINGTON
Purchasing Department
730 Massachusetts Avenue
Arlington, MA 02476
Telephone 781.316.3003

March 3, 2026

Invitation for Bids #26-22
Wicked Cool Mystic Improvements Project – Broadway Plaza

ADDENDUM NO. 1

The attention of bidders submitting bids on the above-referenced project is called to the following Addendum to the Invitation for Bids. The items set forth herein, whether of omission, addition, substitution, or clarification, shall be included in and form a part of the proposal submitted and shall become part of the Contract.

SPECIFICATION CHANGES

1. Remove all references to the installation of reinforced cement concrete pad footings in the bid documents. The shade structure and benches will be surface mounted into the existing concrete.

DRAWING CHANGES

1. Replace original Drawing 4 (Details), with attached Drawing 4, revised as of February 25, 2026. The change consists of replacement of the words "(4) Item # 3012-12SQ-B" with the words "(6) Item # 3012-12SQ-B" in the Parts List. All six posts shall be Item #3012-12SQ-B.

CLARIFICATIONS

1. On Drawing 4 (Details), the 12' and 9' dimensions at each post indicate mounting height of frame/ fabric, not the overall pole height.
2. The shade sail fabric is arranged on the poles with two opposite corners mounted at the top and the two alternate corners mounted lower. This configuration is called a hypar and maintains tension on the fabric minimizing wear or moisture retention. See attached example photo for reference.
3. If a manufactured kit providing comparable shade area and portability is proposed by the awarded contractor, it will be considered equivalent. The scalable modular design

provided was a result of the site selection process which required transferability at multiple uniquely shaped locations, but those options have since been removed from the scope.

QUESTIONS SUBMITTED DURING PRE-BID CONFERENCE

1. Question: Is restoration needed in areas other than those adjacent to the immediate footing areas?
Answer: No, restoration is limited strictly to the immediate footing areas.

2. Question: Are there any site constraints not shown in the bid documents?
Answer: There are no known site constraints not shown in the bid documents at this time. The Town of Arlington's Conservation Agent can provide guidance regarding tree protection, if needed.

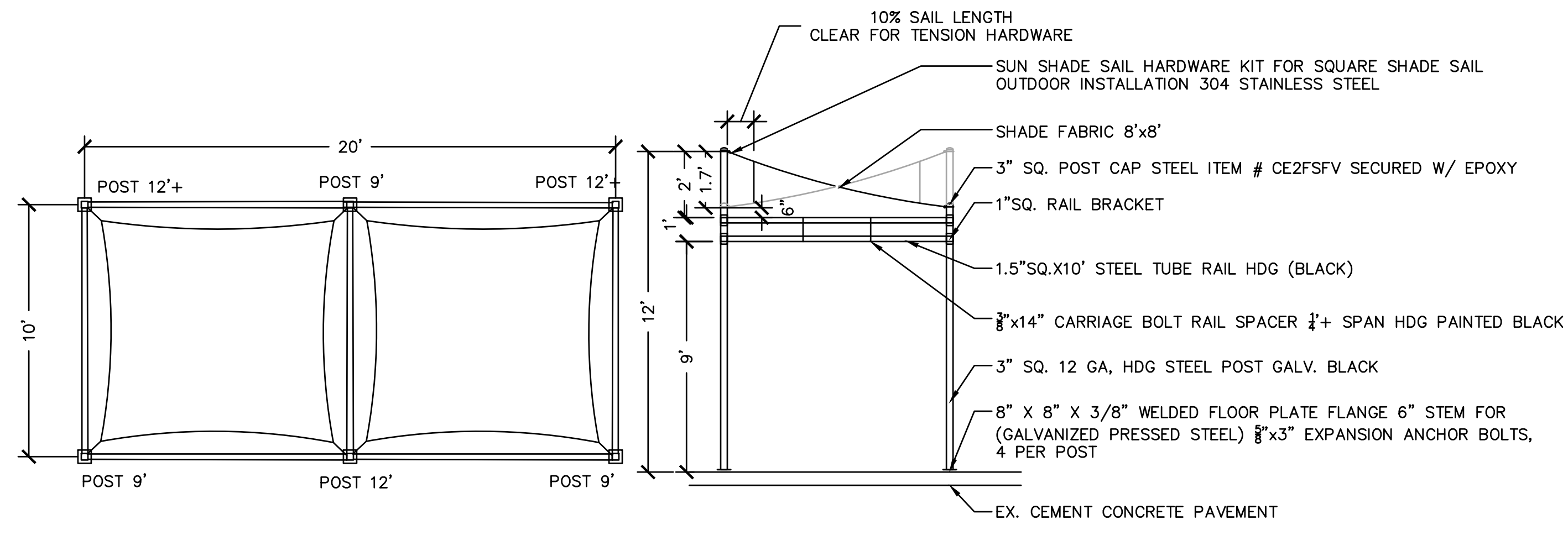
3. Question: Is parking available?
Answer: Parking is available in the adjacent lot, which is first-come, first-served. The contractor can also work with the Project Team (e.g., BSC Group and Town of Arlington Conservation Agent) to coordinate an arrangement with the Arlington Police Department to establish temporary zone.

All other terms and conditions of the Invitation for Bids remain unchanged.

Bidders are advised to acknowledge this addendum on the bid form. Failure to acknowledge any or all addenda could result in rejection of the bid as non-responsive.

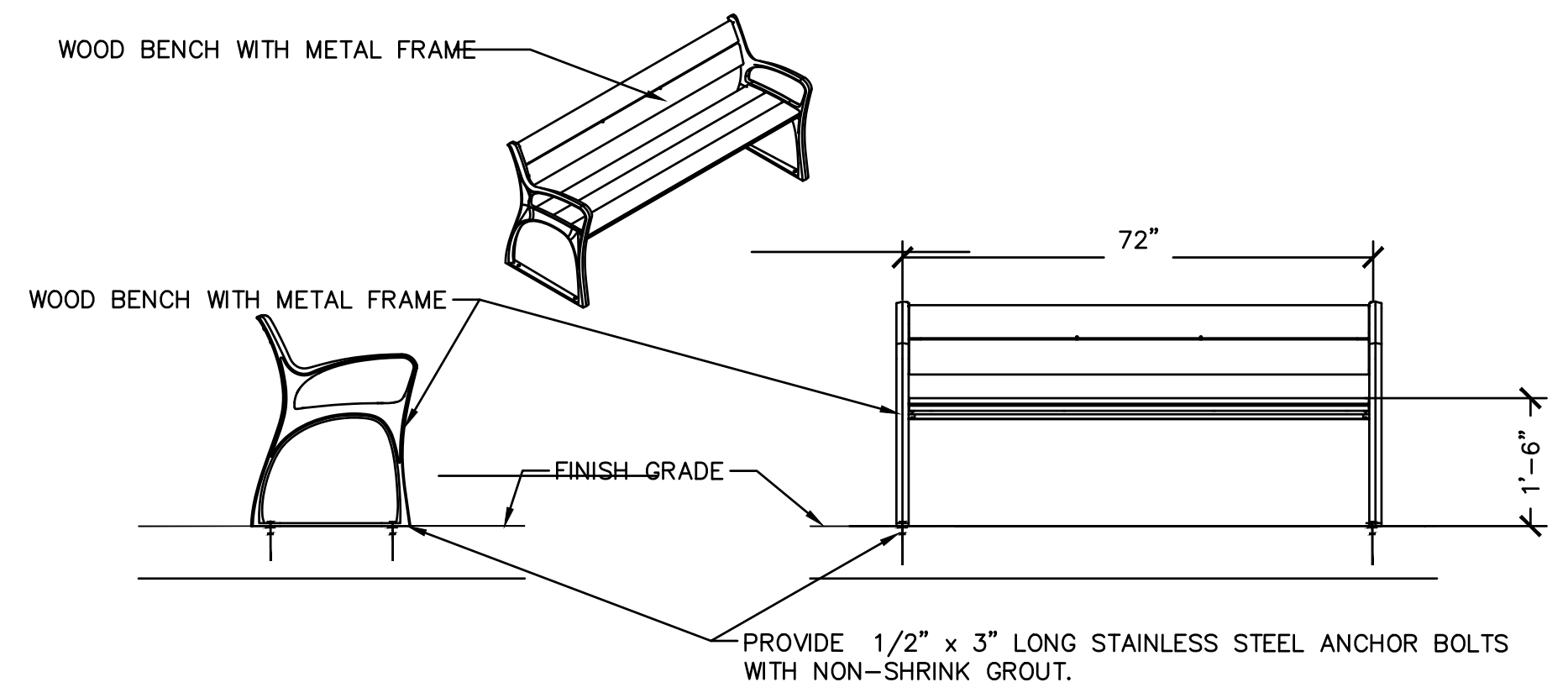
James Feeney
Town Manager

- Parts List:
- HOOVER FENCE CO. OR EQUIVALENT METAL FENCE
 - (6) Item # 3012-12SQ-B, 3" SQ. 12GA, 12' POST WITH 3/8"x8" SQ. WELDED SURFACE MOUNTING PLATE, HDG, BLACK
 - (16) 3"x2 1/2" 316 STAINLESS WEDGE ANCHOR WITH FLAT WASHER, LOCK WASHER, NUT AND CAP NUT
 - (1) SUN SHADE SAIL HARDWARE KIT FOR RECTANGLE SQUARE SHADE SAIL OUTDOOR INSTALLATION 304 STAINLESS STEEL
 - (16) NW6075 1-1/8" X 1-1/8" FOR 1" X 1" RAIL
 - SQUARE STEEL FENCE RAIL INTERNAL MOUNTING COMMERCIAL BRACKET IRON FENCE BRACKET (BLACK)
 - (8) 1" SQ. X 1/2" RAIL HDG, BLACK
 - (8) 3/8"x14" CARRIAGE BOLT RAIL SPACER HDG BLACK



TEMP. SHADE SAIL STRUCTURE

SCALE: NONE



BENCH (WITH BACK AND ARMRESTS)

SCALE: NONE

CASEY LEE BASTIEN
LANDSCAPE ARCHITECT

**WICKED COOL
MYSTIC**

BROADWAY AT MASS AVE.

ARLINGTON
MASSACHUSETTS

**CONSTRUCTION
DETAILS**

JUNE 2025

REVISIONS:

NO.	DATE	DESC.
1	2/25/26	SHADE SAIL DETAIL

MYSTIC RIVER WATERSHED
ASSOCIATION
24 Maple St
Arlington, MA 02476-6401

BSC GROUP
BUILD | SUPPORT | CONNECT
803 Summer Street
Boston, Massachusetts
02127
617 896 4300

© 2026 BSC Group, Inc.

SCALE: NOTED

100% CONSTRUCTION

